

T7N
R6E



Office of the Monroe County Surveyor
Trohn Enright-Randolph

Health Services Building
119 West 7th Street
Bloomington, IN 47404
Phone: (812) 349-2570

Dear User,

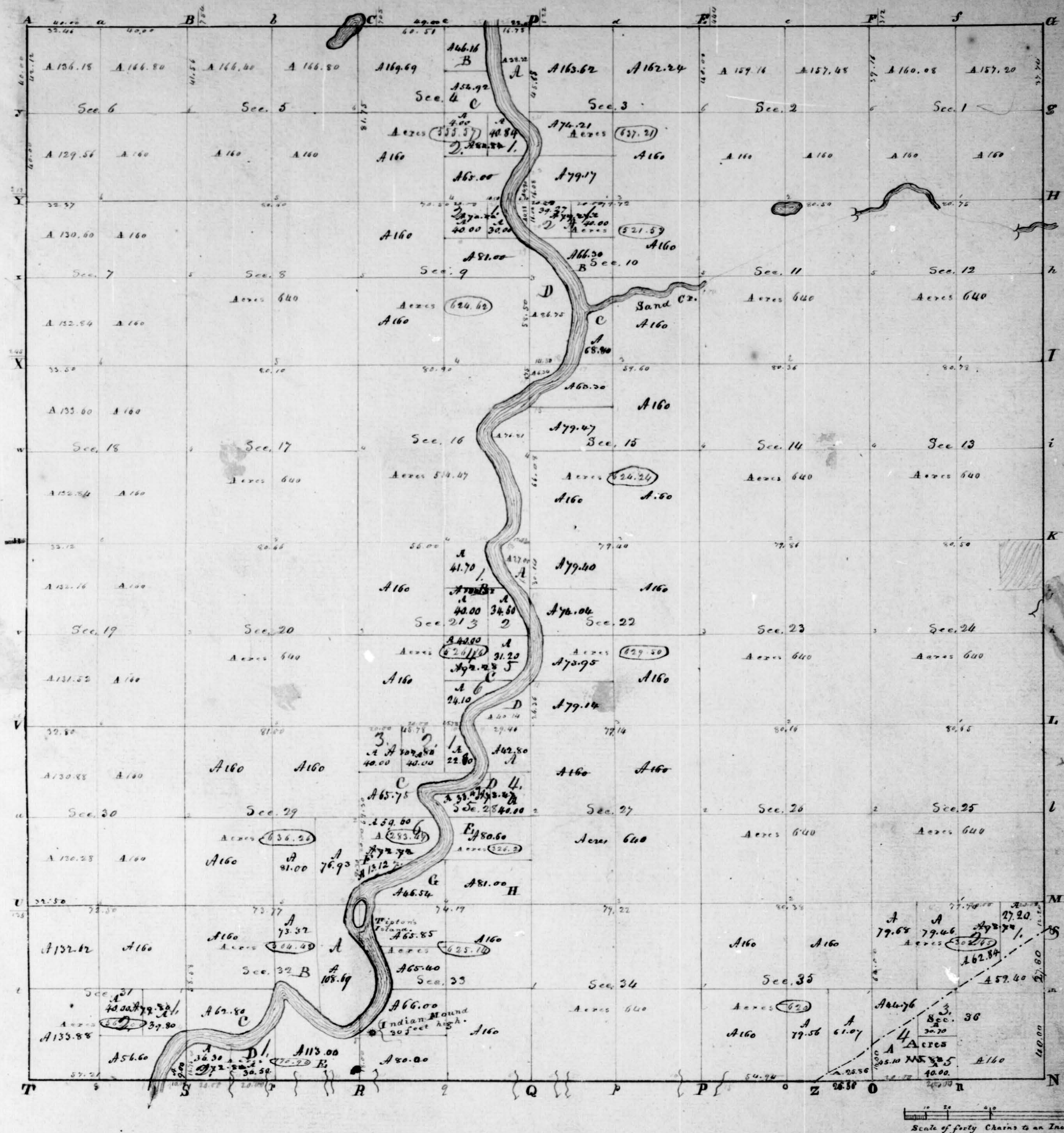
The following images were obtained in 2017 by the Office of the Monroe County Surveyor from the State Imaging and Microfilm Laboratory at the Indiana State Archives. The field notes and plats for Jackson County are stored on microfilm Reel 7545 at the Indiana State Archives. Each page provided by the State Imaging and Microfilm Laboratory is approximately 18MB. Our office combined the pages by Township & Range and reduced the resulting pdfs. This process may have caused some degradation in quality. We will provide unreduced images of specific pages if required. Please contact us at 812-349-2570 or at SurveyorsOffice@co.monroe.in.us to request a higher quality image of any specific page.

The pdfs are bookmarked with the original page numbers as assigned by the State Imaging and Microfilm Laboratory.

Be prepared to provide the county name, reel number, and the required page numbers when requesting full sized images.

If you would like a DVD of an entire county, please provide us with one DVD per county along with a self-addressed, stamped envelope.

Trohn Enright-Randolph
Monroe County Surveyor

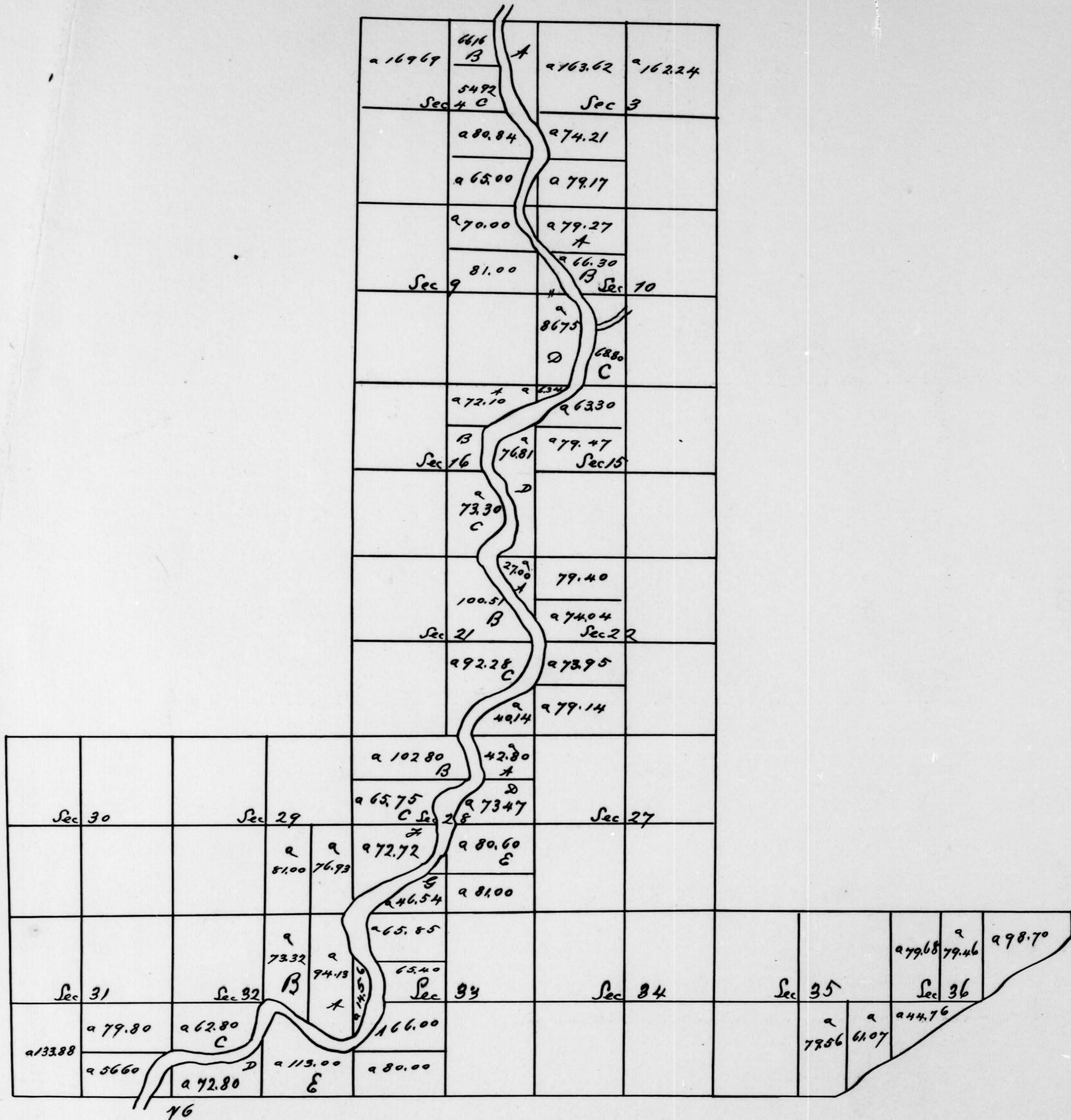


Township N. VII North, Range N. VI East of 2nd Mer. Surveyed by B. F. Morris. 1819.

Description of the Soil on the interior Sectional lines.

Between Sections	Quality &c.	Between Sections	Quality &c.	Between Sections	Quality &c.
35 & 36	Flat 3 rd rate. Beech, W. Oak &c.	2 & 3	Level 1 st rate. Beech, Sugar, Hackberry, Walnut, Hopt. & Spruce	9 & 10	First rate bottom. Beech, Sugar, Oak, Elm &c.
25 & 26	Same	3 & 4	Same	10 & 11	Same
25 & 26	Level 2 nd rate. Beech, Oak, Poplar &c.	35 & 36	Level 3 rd rate	4 & 5	Same
24 & 25	Broken 3 rd rate	37 & 38	Level 2 nd rate. Beech, Sugar, Poplar, Elm, Hopt. & Spruce	11 & 12	Same
23 & 24	Rolling 2 nd rate. Beech, Sugar, Poplar, Elm, Hopt. & Spruce	37 & 38	Broken 3 rd rate	31 & 32	Same
13 & 14	Same	22 & 23	Flat 3 rd rate	29 & 30	Same
13 & 14	Flat 2 nd rate. Beech, Sugar, Poplar, Elm, Hopt. & Spruce	21 & 22	Low river bottom. Beech, Sugar, Poplar, Elm, Hopt. & Spruce	30 & 31	Part level, part rolling 2 nd rate. Beech, Sugar, Poplar, Elm, Hopt. & Spruce
12 & 13	Level 2 nd rate	15 & 16	Level 2 nd rate. Beech, Sugar, Poplar, Elm, Hopt. & Spruce	29 & 30	Level 2 nd rate
11 & 12	Part 1 st rate. Part 2 nd rate very brushy	15 & 16	Low river bottom	28 & 29	Level 1 st rate. Beech, Sugar, Poplar, Elm, Hopt. & Spruce
1 & 2	Level 2 nd rate. Beech, Sugar, Poplar, Elm, Hopt. & Spruce	10 & 11	Level 2 nd rate. Beech, Sugar, Poplar, Elm, Hopt. & Spruce	19 & 20	Level 2 nd rate. Beech, Sugar, Poplar, Elm, Hopt. & Spruce
24 & 25	Rolling 3 rd rate	9 & 10	Low river bottom	18 & 19	Level 2 nd rate
24 & 25	Level 3 rd rate	8 & 9	Level 1 st rate. Beech, Sugar, Poplar, Elm, Hopt. & Spruce	17 & 18	Level 2 nd rate
23 & 24	Rolling 3 rd rate	7 & 8	Part low river bottom. Part level 1 st rate	16 & 17	Level 2 nd rate
23 & 24	Level 3 rd rate	6 & 7	Level 2 nd rate	15 & 16	Level 2 nd rate
22 & 23	Rolling 3 rd rate	5 & 6	Level 2 nd rate	14 & 15	Level 2 nd rate
22 & 23	Level 3 rd rate	4 & 5	Level 2 nd rate	13 & 14	Level 2 nd rate
21 & 22	Rolling 3 rd rate	3 & 4	Level 2 nd rate	12 & 13	Level 2 nd rate
21 & 22	Level 3 rd rate	2 & 3	Level 2 nd rate	11 & 12	Level 2 nd rate
20 & 21	Rolling 3 rd rate	1 & 2	Level 2 nd rate	10 & 11	Level 2 nd rate
20 & 21	Level 3 rd rate	0 & 1	Level 2 nd rate	9 & 10	Level 2 nd rate
19 & 20	Rolling 3 rd rate	0 & 1	Level 2 nd rate	8 & 9	Level 2 nd rate
19 & 20	Level 3 rd rate	0 & 1	Level 2 nd rate	7 & 8	Level 2 nd rate
18 & 19	Rolling 3 rd rate	0 & 1	Level 2 nd rate	6 & 7	Level 2 nd rate
18 & 19	Level 3 rd rate	0 & 1	Level 2 nd rate	5 & 6	Level 2 nd rate
17 & 18	Rolling 3 rd rate	0 & 1	Level 2 nd rate	4 & 5	Level 2 nd rate
17 & 18	Level 3 rd rate	0 & 1	Level 2 nd rate	3 & 4	Level 2 nd rate
16 & 17	Rolling 3 rd rate	0 & 1	Level 2 nd rate	2 & 3	Level 2 nd rate
16 & 17	Level 3 rd rate	0 & 1	Level 2 nd rate	1 & 2	Level 2 nd rate
15 & 16	Rolling 3 rd rate	0 & 1	Level 2 nd rate	0 & 1	Level 2 nd rate
15 & 16	Level 3 rd rate	0 & 1	Level 2 nd rate	0 & 1	Level 2 nd rate

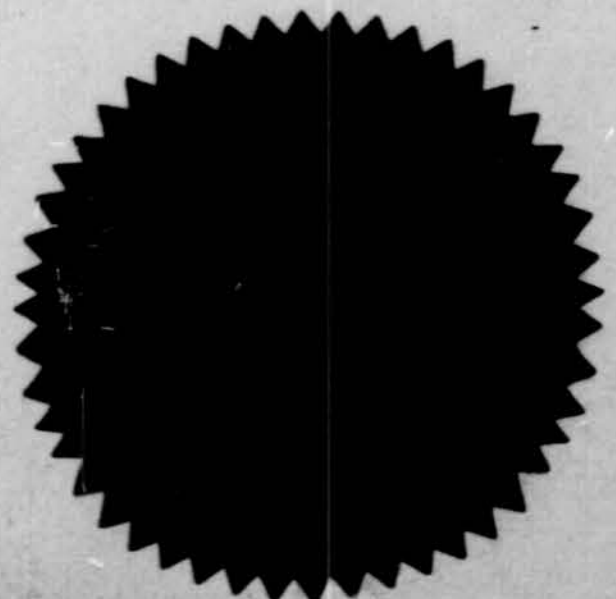
Township No 7 North Range No 6 East
of 2^d Meridian



DEPARTMENT OF THE INTERIOR,
GENERAL LAND OFFICE

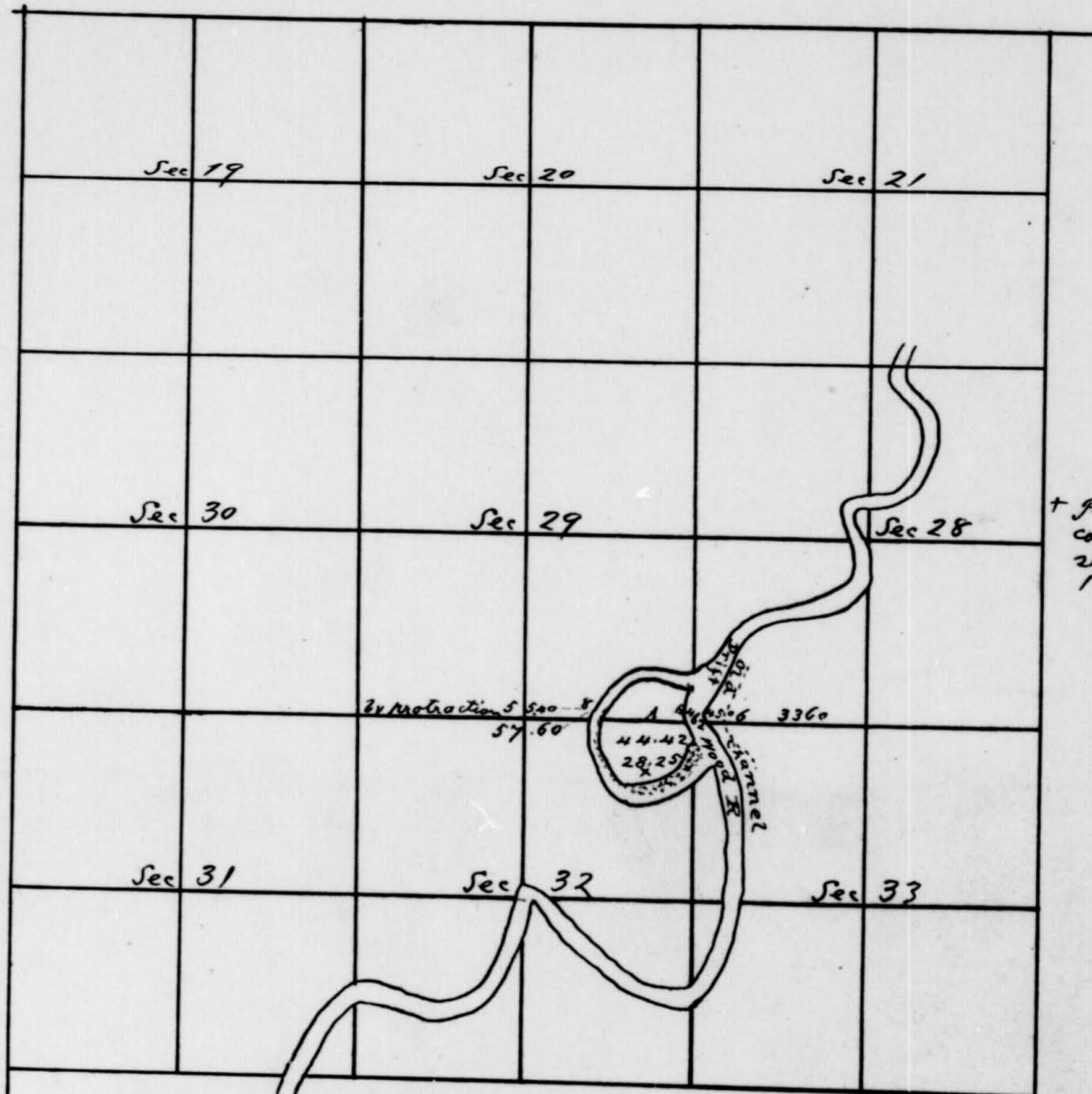
Washington, D. C. June 12th 1894
I, S. M. Lamm, Commissioner of the General Land Office, do hereby certify that this is a true and correct exemplification of the official plat of Township No. 7 North Range No. 6 East, 2^d Principal Meridian, on file in this office.

In testimony whereof I have hereunto subscribed my name, and caused the Seal of this office to be affixed at the City of Washington, on the day and year above written.
S. M. Lamm
Commissioner of the General Land Office.



Township N° 7 N. Range N° 6 E 2nd Meri. Indi.

Rec'd with L. G. Allen of 14 Aug 46



Surveyed by L. H. Sprague June 20th 1846
46

Scale 40 chains to an inch

The above plat of Tipton Island in Township No 7 North of Range No 6 East 2^d Meridian Indiana is strictly conformable to the field notes of the survey thereof on file in this Office which have been examined and approved
Surveyor General's Office
Detroit Aug 14 1846

Lucius Lyon,
Sur Genl

DEPARTMENT OF THE INTERIOR,
GENERAL LAND OFFICE

Washington, D. C. June 9th 1894

I, S. M. Lamoine, Commissioner of the General Land Office, do hereby certify that this is a true and literal exemplification of the official plat of Township No. 7 North Range No. 6 East - 2nd Prin. Meridian, on file in this office

In testimony whereof I have hereunto subscribed my name, and caused the Seal of this office to be affixed at the City of Washington, on the day and year above written.



S. M. Lamoine
Commissioner of the General Land Office

E. Boundary of T. 7 N. R. 6 E.

North Between Towns 7 & 8 in Ranges 6 & 7 East Re-measurement—
 35.50 Brook 50 links wide course West—
 40.00 Set a half mile post from which a Beech 10 inches dia. bears S 15 N 8 E, Beech 7 inches dia. bears N 45 W 11 E
 67.80 To the post established on the Indian boundary from which a Beech 8 inches dia. bears South 5 E
 In Sassafras 18 inches dia. bears North 6 E — Good farming land —

E. Boundary of T. 7 N. R. 6 E.

West Between Towns 6 & 7 Range 6 East
 15.00 Brook 10 E wide course South, West—
 37.00 Brook 50 E wide course South, West—
 40.00 Set a half mile post from which a Beech 10 inches dia. bears N 35 E 12 E, Beech 10 inches dia. bears S 60 W 25 E
 47.50 Beech 24 inches diam?
 80.00 Set post corner of Sec. 35 & 36. T. 7 N. R. 6 E from which a Beech 24 inches dia. bears N 77 E 28 E
 Beech 10 inches dia. bears S 71 W 15 E. Good farming land —

West Line continued—
 25.86 Set post on the Indian boundary from which a W. Oak 24 inches dia. bears N 39 E 2 E
 In Maple 10 inches dia. bears S 63 W 17 E — Land the same — Timber Oak, Hickory, & Poplar —

E. Boundary T. 1 N. R. 5 E. Aug 15th 1861

Var. 57 50 E

North Between Towns 1 & 2 North Ranges 5 & 6 East of 2nd Meridian—
 first mile
 14.65 Chesnut Oak 12 inches dia. } Poor high
 28.50 Yellow Pine 15 inches dia. } hills
 40.00 Quarter Sec. post from which a Ches. Oak 15 inches dia. bears N 20 E 7 E — ditto 8 inches dia. bears S 36 W 10 E — ditto
 57.00 Brook 10 E wide running West
 61.00 Beech 12 inches diam?
 80.00 Set a post corner to Sec. 25 & 36. T. 1 N. R. 5 E from which a Ches. Oak 15 inches dia. bears S 54 W 13 E, ditto 13 inches dia. bears S 87 E 18 E

North 2nd mile

21.50 Brook 6 E wide course West } High brushy ridges
 32.50 W. Oak 8 inches diam? } Timber Oak Ches. P.
 40.00 Quarter Sec. post. a Ches. Oak 15 inches dia. bears N 81 W 28 E ditto 12 inches dia. bears S 73 E 16 E
 62.30 Poplar 12 inches diam?
 80.00 Post corner to Sec. 24 & 25. T. 1 N. R. 5 E from which a Hickory 15 inches dia. bears N 10 E 7 E. Poplar 40. 257. 6. 14. 10

North 3rd mile

5.00 Brook 3 E wide course N. E. 22 E
 33.50 W. Oak 18 inches diam? } land
 40.00 Quarter Sec. post from which a W. Oak 12 inches dia. bears N 15 E 20 E ditto 8 inches dia. bears S 38 E 26 E
 62.00 Brook 20 E wide course N } Good land, good water Sweet timbered
 66.50 Beech 18 inches diam? } with Oak, ash, beech P.
 80.00 Post corner to Sec. 13 & 24. a Beech 18 inches dia. bears N 11 W 1 E, a Beech 8 inches dia. bears S 30 E 19 E —

North 4th mile

4.00 Brook 3 E wide course S. W. } Good level land, timbered
 19.50 Beech 20 inches diam. } with Sugar, Beech, Chesnut
 21.00 Brook 35 E wide course S. W.
 31.50 Beech 30 inches diam.

Township N. 7 North, Range N. 6 East 2nd Mer.

Range line.	Var. 6° 30' E	
North Beginning on the Boundary Between Ranges 6 & 7 Township 7 North		North On the East Side of Sec. 12
12.20 Set post corner of Sections 25 & 36	Beech 8 S 33 E 24	20.50 H. Shaw Oak 18 in. diam.
	do 18 S 82 W 24	40.00 gr. Sec. corner Beech 6 S 77 E 14
North On the East Side of Sec. 25		do 6 S 49 W 20
22.85 H. Beech 15 in. diam.		50.10 H. Beech 20 in. diam.
40.00 gr. Sec. corner Beech 30 S 10 E 9		63.50 H. Beech 200 lbs S. W
	do 6 S 16 W 25	80.00 Set post corner to Sec. 1 & 2
65.00 H. Shaw Oak 24 in. diam.		Beech 7 S 61 E 19
80.00 Set post corner to Sec. 24 & 25		do 13 S 32 W 31
	Hickory 18 S 11 E 16	Not level land. Timber Beech & P.
	do 40 S 11 W 11	North Between Ranges 6 & 7 Township 7 North
Not Beech land. Ang th Spruce		On the East Side of Sec. 1
North On the East Side of Sec. 24		100.00 gr. Sec. corner Ash 15 S 24 E 8
19.50 H. W. Oak 30 in. diam.		Hickory 8 S 10 W 7
40.00 gr. Sec. corner Sugar 10 S 34 E 12		77.75 Set post corner of Ranges 5 & 6 Township 6 North
	Ash 15 S 12 W 9	Sections 1, 6, 31, 36 Beech 8 S 24 W 4
49.40 H. Maple 18 in. diam.		do 14 S 10 W 32
57.29 H. Beech 7 lbs S. W		Rolling good Beech land
80.00 Set post corner to Sec. 13 & 24		Township line. Var. 7° 30'
	Hickory 8 S 86 E 9	West Between Townships 6 & 7 S. 26 East
	do 18 S 76 W 9	On the South Side of Sec. 35
Sand level. Beech. Oak. Hickory. Spruce. Ang th Spruce		25.00 Intersected the old boundary line
North On the East Side of Sec. 13		40.00 gr. Sec. corner Beech 12 S 15 W 17
32.67 H. Hickory 18 in. diam.		do 4 S 34 E 5
40.00 gr. Sec. corner Elm 18 S 72 E 12		44.50 H. Beech 12 in. diam.
	Beech 10 S 82 W 16	70.00 H. Beech 15 lbs S. W
57.95 H. Shaw Oak 40 in. diam.		80.00 Set post corner of Sec. 34 & 35
80.00 Set post corner of Sec. 12 & 13		Do good 6 S 41 W 22
	Beech 5 S 77 E 1	Beech 26 S 8 E 14
	do 10 S 16 E 12	Sand level. Beech. Oak. Spruce
Sand level & Not, Beech. Hickory. Oak & P.		

West On the South Side of Sec. 34
 11.75 H. Branch 10 lbs South
 20.00 gr. Sec. corner Beach 8 West
 do 15 S 48 E 27
 59.50 H. Branch 5 lbs South
 68.50 H. Branch 5 lbs South
 80.00 Set post corner of Sec. 33 & 34
 B- 24 S 45 E 13
 Dogwood 4 S 40 E 12
 Sand level 3rd water, Beach, Oak, Gum, Poplar, Sugar, Beech, Hickory
 and 5th Spruce
 West On the South Side of Sec. 33
 6.50 H. Branch 5 lbs South
 9.70 H. Walnut 2 1/2 in. diam.
 20.00 gr. Sec. corner Beach 24 S 85 E 27
 do 14 S 30 N 14
 44.50 H. Branch 4 lbs North
 80.00 Set post corner of Sec. 32 & 33
 Beach 8 S 31 N 8
 do 9 S 31 E 8
 Sand level, good soil, Beach, M. Oak, 1st Spruce
 West On the South Side of Sec. 32
 9.25 H. Branch 4 lbs North
 15.00 Same 4 lbs North
 31.00 Same 4 lbs North
 34.00 H. Poplar 36 in. diam.
 40.00 gr. Sec. corner Beach 10 S 38 N 2
 do 4 S 20 N 22
 44.00 H. Branch 4 lbs North
 58.00 Same 4 lbs North
 72.62 H. Sycamore 72 in. diam.
 80.00 Set post corner to Sec. 31 & 32
 Hackberry 15 S 50 N 22
 Ash 4 S 66 E 19
 First same as above, last 2 have overflows 1st

West On the South Side of Sec. 31
 10.00 Intersected the River bottom 10 S 88 E 150
 15.91 Post on West bank of river Sugar 10 S 53 N 27
 do 15 S 60 N 40
 33.12 gr. Sec. post Beach 12 S 57 N 20
 do 18 S 39 E 16
 73.12 Intersected the corner of Township 1st N. R. 6 E.
 First 1/2 low land subject to overflow. 2nd 1/2 D.
 Bottom land soil good. Beach, Hackberry 1st
 Surveyed by John M. Donahoe D. S.
 Subdivisions of Township 1st N. R. 6 East
 North Between Sec. 35 & 36 One 6.30
 18.50 H. B. Oak 18 in. diam.
 24.00 gr. Sec. corner H. Oak 18 S 32 E 8
 do 12 S 62 N 28
 44.06 H. Beach 12 in. diam.
 64.00 Set post corner to Sec. 25, 26, 35, 36
 Beach 16 S 8 E 26
 do 12 S 10 N 28
 Sand flat 3rd water, Beach, M. Oak 1st
 East Between Sec. 25 & 36 One Random
 40.00 Temporary gr. Sec. post
 79.70 Intersected East Boundary 19 lbs South of post
 Sand level 3rd water, Beach, Oak, Poplar, 1st Spruce
 West Corrected
 39.85 gr. Sec. corner Beach 10 S 82 N 19
 do 15 S 62 E 50
 79.70 Section corner
 North Between Sec. 25 & 26
 27.00 H. Beach 20 in. diam.
 40.00 gr. Sec. corner Beach 12 S 4 E 18
 do 6 S 25 E 17
 60.65 H. Beach 15 in. diam.

80.00 Set post corner of Sec. 23, 24, 25, 26
 Beach 12 S 43 E 20
 do 6 S 3 N 17
 Sand level 2nd water, Beach, Oak, Poplar, 1st Spruce
 East Between Sec. 24 & 25 One Random
 40.00 Temporary gr. Sec. post
 80.65 Intersected East Boundary 50 lbs South of post
 Sand level 3rd water, Beach, Oak, Poplar, Hickory, Gum 1st
 West Corrected
 40.32 gr. Sec. corner Beach 20 S 4 E 27
 do 15 S 56 E 28
 80.65 Section corner
 North Between Sec. 23 & 24
 22.36 H. Beach 20 in. diam.
 40.00 gr. Sec. corner Sugar 10 S 28 N 14
 do 15 S 73 E 20
 65.15 H. M. Walnut 30 in. diam.
 80.00 Set post corner to Sec. 13, 14, 23, 24
 Beach 10 S 20 N 12
 do 30 S 82 N 15
 Sand level 2nd water, Beach, Sugar, Poplar, Elm, 1st Spruce
 East Between Sec. 13 & 14 One Random
 40.00 Temporary gr. Sec. post
 80.50 Intersected East Boundary 80 lbs South of post
 Sand & timber similar as above.
 West Corrected Sept. 13th 1819
 40.25 gr. Sec. corner Hackberry 30 S 53 E 14
 Beach 10 S 10 E 12
 80.50 Section corner
 North Between Sec. 13 & 14
 21.60 H. Beach 30 in. diam.
 40.00 gr. Sec. corner H. Oak 30 S 28 N 29
 do 32 S 28 E 17
 54.54 H. Beach 8 in. diam.

80.00 Set post corner to Sec. 11, 12, 13, 14
 Sugar 10 S 13 N 9
 Hackberry 12 S 55 E 14
 Sand level 3rd water, Beach, Oak, Hickory 1st
 East Between Sec. 12 & 13 One Random
 40.00 Temporary gr. Sec. post
 80.78 Intersected East Boundary 102 lbs South of post
 Sand level 3rd water, Beach, Oak, Hickory, 1st Spruce
 West Corrected
 40.39 gr. Sec. corner Beach 6 S 4 E 23
 do 14 S 80 N 14
 80.78 Section corner
 North Between Sec. 11 & 12
 17.77 H. Poplar 50 in. diam.
 46.00 gr. Sec. corner Beach 15 S 3 N 15
 do 14 S 20 E 11
 41.00 Entered fallen timber
 75.00 Left fallen timber
 76.00 Crossed Sand Creek 100 lbs West
 80.00 Set post corner to Sec. 1, 2, 11, 12
 Hackberry 6 S 2 N 16
 Buckeye 8 S 52 E 13
 Sand level 3rd water, Post 1st water, Beach, Sugar,
 Hackberry 1st Spruce, Brainerd 1st
 East Between Sec. 1 & 12 One Random
 3.50 Crossed Sand Creek 180 ft
 10.00 Entered fallen timber
 24.00 Crossed Sand Creek 1st N
 40.00 Temporary gr. Sec. post
 71.00 Left fallen timber
 80.75 Intersected East Boundary 1.1 miles South of post
 Over Creek & low bottom, Sycamore, Cottonwood, Hackberry 1st
 West Corrected
 9.75 fallen timber
 40.37 gr. Sec. corner Sycamore 30 S 56 E 26
 Hackberry 4 S 77 E 34

56.75 In Sand Creek
 60.75 Soft fallen timber
 77.25 Cropped Sand Creek
 80.75 Section corner
 North Between Secs 1 & 2
 20.90 St. Beech 24 in. diam.
 40.00 gr. Sec. corner Oak Ash 12 St 71 N 12
 Gum 30 S 34 E 17
 65.77 St. Poplar 50 in. diam.
 77.16 Intersected North Boundary 3.2 m. West of Post
 Beech 12 S 80 E 22
 Gum 30 St 5 E 17
 Sept 15, 1819
 Sand level 2nd water, Beech, Oak, Sugar, Maple, Poplar, Mug. Spice
 North Between Secs 3 & 4
 34.50 St. Beech 20 in. diam.
 40.00 gr. Sec. corner M. Oak 30 S 20 N 25
 Beech 10 S 24 E 21
 58.76 St. Beech 18 in. diam.
 80.00 Set post corner to Secs 26, 27, 34, 35
 Maple 8 St 47 E 15
 Beech 15 S 8 E 26
 Sand Rolling 3rd water, Beech, Oak, Gum, Poplar, Dogwood, Spice
 East Between Secs 26 & 35 On Random
 40.00 Temporary gr. Sec. post
 80.38 Intersected East line 1.10 m. South of Post
 Sand level 3rd water, Beech, Oak, Hickory, Gum, Mug. Spice, Greenbrier
 West Corrected
 40.19 gr. Sec. corner Beech 20 S 85 N 13
 do 18 S 30 E 31
 80.38 Section corner
 North Between Secs 26 & 27
 22.15 St. Beech 16 in. diam.
 40.00 gr. Sec. corner M. Oak 20 S 34 E 17
 M. Oak 24 S 81 N 26

63.72 St. Beech 12 in. diam.
 80.00 Set post corner to Secs 22, 23, 26, 27
 Beech 16 S 15 N 20
 do 8 St 59 E 25
 Sand Rolling 3rd water, Beech, Oak, Poplar, Ash, Mug. Dogwood, Spice
 East Between Secs 23 & 26 On Random
 40.00 Temporary gr. Sec. post
 80.16 Intersected East line 35 m. South of Post
 Rolling 3rd water, Beech, Oak, Poplar, V. Mug. Spice
 West Corrected
 40.08 gr. Sec. corner Beech 4 St 32 N 10
 do 3 S 76 E 5
 80.16 Section corner
 North Between Secs 22 & 23
 24.75 St. Beech 10 in. diam.
 40.00 gr. Sec. corner Beech 10 S 25 E 24
 do 8 West 21
 64.80 St. Beech 20 in. diam.
 80.00 Set post corner to Secs 14, 15, 22, 23
 M. Oak 8 S 39 E 25
 Beech 18 St 18 N 21
 Rolling 3rd water, Beech, Oak, Ash, Poplar, Mug. Spice
 East Between Secs 14 & 23 On Random
 40.00 Temporary gr. Sec. post
 79.86 Intersected East line 100 m. South of Post
 Sand Timber similar as above
 West Corrected
 39.93 gr. Sec. corner Beech 16 St 20 N 4
 Poplar 36 S 13 E 38
 79.86 Section corner
 North Between Secs 14 & 15
 27.50 St. Gum 18 in. diam.
 40.00 gr. Sec. corner Beech 10 S 77 E 24
 do 5 St 36 N 4
 63.80 St. Beech 12 in. diam.

75.00 Intersected fallen timber
 80.00 Set post corner to Secs 10, 11, 14, 15
 Beech 10 St 88 E 23
 do 12 St 48 N 45
 First 1/2 mile Rolling last 1/2 mile flat land 3rd water, Beech, Poplar,
 Oak, Maple, Mug. Dogwood, Spice - Sept. 15th 1819
 East Between Secs 11 & 14 On Random
 13.00 Soft fallen timber
 40.00 Temporary gr. Sec. post
 80.36 Intersected East line 14 m. South of Post
 Sand level 2nd water, Beech, Oak, Sugar, Mug. Dogwood, Spice
 West Corrected
 40.15 gr. Sec. corner Beech 18 S 82 N 17
 do 12 S 78 E 11
 80.36 Section corner
 North Between Secs 10 & 11
 32.24 Cropped Sand Creek 100 m. S 80 N
 36.00 Soft fallen timber
 40.00 gr. Sec. corner Specimen 36 S 17 E 25
 do 48 St 70 E 33
 61.17 St. Beech 18 in. diam.
 80.00 Set post corner to Secs 2, 3, 10, 11
 Sugar 12 St 43 E 19
 Beech 8 S 83 N 15
 First 1/2 mile through thickets in fallen timber last
 1/2 mile good bottom, Beech, Sugar, Poplar, Hickory, Spice
 East Between Secs 2 & 11 On Random
 40.00 Temporary gr. Sec. post in Edge of forest South
 80.50 Intersected East line 36 m. North of Post
 Sand level 1st water, Beech, Sugar, Hickory, Walnut, Mug. Spice, Dogwood
 West Corrected
 40.25 gr. Sec. corner in a fence
 No bearing trees
 80.50 Section corner

North Between Secs 2 & 3
 22.11 St. Beech 16 in. diam.
 40.00 gr. Sec. corner Beech 18 S 34 E 10
 do 16 St 64 N 35
 57.36 St. Beech 20 in. diam.
 80.00 Intersected North Boundary 4 m. West of Post
 Beech 18 St 31 N 14
 do 12 S 38 N 25
 Sand level 1st water, Beech, Sugar, Oak, Ash, Walnut, Poplar, Mug. Spice
 North Between Secs 33 & 34
 20.77 St. Sugar 18 in. diam.
 40.00 gr. Sec. corner Beech 16 St 66 N 28
 do 14 S 70 N 32
 60.00 St. Beech, Oak 15 in. diam.
 80.00 Set post corner to Secs 27, 28, 33, 34
 M. Oak 36 St 81 E 17
 Beech 8 St 42 N 30
 Sept 16th 1819
 Sand level 3rd water, Beech, M. Oak, Mug. Spice, Dogwood
 East Between Secs 27 & 34 On Random
 40.00 Temporary gr. Sec. post
 79.22 Intersected East line 54 m. South of Post
 Sand level 2nd water, Beech, Oak, Poplar, Walnut, Mug. Spice
 West Corrected
 39.61 gr. Sec. corner Beech 8 S 21 E 30
 do 10 St 20 N 18
 79.22 Section corner
 North Between Secs 27 & 28
 24.50 St. Poplar 30 in. diam.
 40.00 gr. Sec. corner Beech 4 South 5
 do 6 East 3
 57.00 St. Beech 36 in. diam.
 80 Set post corner to Secs 21, 22, 27, 28
 Beech 6 S 45 E 24
 do 15 St 61 N 15
 Sand level 3rd water, Beech, Oak, Hickory, Poplar, V. Mug. Spice

East Between Sec: 22 & 24 On Brandon
 40.00 Temporary g^r. Sec. post
 79.16 Intersected East line 62 lks South of post
 Sand flat 3rd water, Beech, Oak, Hickory, Gum, Mugth. Spice
 West Corrected
 39.57 g^r. Sec. corner Beech 20 S 20 N 35
 do 15 S 64 N 24
 79.14 Section corner
 North Between Sec: 21 & 22
 26.36 To East Bank of Driftwood Sugar 16 S 74 E 22
 do 24 S 18 N 30
 40.00 g^r. Sec. post in River No bearing trees
 49.86 Post on same bank of River bottomwood 10 S 32 E 6
 do 8 S 76 N 7
 58.37 A. Hackberry 15 in. diam.
 80.00 Set post corner to Sec: 15, 16, 21, 22
 Buckeye 8 S 16 E 39
 Hackberry 8 S 14 N 55
 See River Bottom. Gum, Walnut, Hackberry, Buckeye, Sugar
 East Between Sec: 15 & 22 On Brandon
 40.00 Temporary g^r. Sec. post
 79.40 Intersected East line 42 lks South of post
 Sand flat 2nd water, Beech, Sugar, Elm, V. Mugth. Spice
 West Corrected
 39.70 g^r. Sec. corner Beech 12 S 18 E 31
 Sugar 10 S 56 N 7
 79.40 Section corner
 North Between Sec: 15 & 16
 25.70 A. Hackberry 18 in. diam.
 40.00 g^r. Sec. corner Hickory 8 S 44 N 21
 Buckeye 10 S 77 N 26
 56.00 Entered fallen timber
 66.08 East Bank of Driftwood runs S. W
 bottomwood 6 S 65 N 31
 Sycamore 3 S 62 E 40

71.25 Crossed the River to West Bank
 Hackberry 8 S 83 E 22
 do 5 S 64 E 22
 80.00 Set post corner to Sec: 9, 10, 15, 16
 Bar. Elder 8 S 13 N 5
 Sycamore 40 S 72 N 60
 See River Bottom. Gum, Walnut, Hackberry, Bar. Elder,
 Walnut, Mugth. Spice, S. W. 15th 1819
 East Between Sec: 10 & 15 On Brandon
 14.50 Crossed Driftwood South
 40.00 Temporary g^r. Sec. post
 79.50 Intersected East line 36 lks South of post
 Sand flat & thickets in fallen timber
 West Corrected
 39.75 g^r. Sec. corner in a thick fallen timber
 No bearing trees
 59.60 Set post on East Bank of River. No thick in bearings
 65.00 Post on West Bank N. Elm 8 S 46 N 28
 do 6 S 73 N 21
 79.50 Section corner
 North Between Sec: 9 & 10
 7.00 Left fallen timber
 36.53 A. Buckeye 12 in. diam.
 40.00 g^r. Sec. corner Hackberry 15 S 57 N 22
 do 10 S 61 E 35
 58.50 To West Bank of River B. Walnut 4 S 45 N 16
 Buckeye 6 S 64 E 7
 64.00 To East Bank of River Sycamore 10 S 87 E 21
 do 50 S 40 E 38
 80.00 Set post corner to Sec: 3, 4, 9, 10
 Sycamore 24 S 31 N 18
 do 48 S 38 E 13
 See River Bottom land. Gum, bottomwood,
 Hackberry, Buckeye, V. Mugth. Spice, V.

East Between Sec: 3 & 10 On Brandon
 40.00 Temporary g^r. Sec. post
 79.72 Intersected East line 46 lks South of post
 Sand flat 1st water, Bottom, Beech, Sugar, Walnut, Hackberry
 Mugth. Spice, Sycamore V.
 West Corrected
 39.86 g^r. Sec. corner Walnut 6 S 41 E 14
 Sugar 12 S 74 E 28
 79.72 Section corner
 North Between Sec: 3 & 4
 16.08 The River set post Oak, S. 10 West 2
 Hackberry 6 East 2
 35.00 Np the River same side Willow 18 S 38 N 8
 do 12 S 62 E 19
 40.00 g^r. Sec. post Bar. Elder 6 S 13 N 30
 N. Elm 8 S 49 E 15
 57.83 A. Hackberry 18 in. diam.
 80.68 Intersected North Boundary 5.22 lks West of post
 Cherry 4 S 13 N 22
 R. Elm 4 S 80 N 15
 First 1/2 mile low River bottom. last 1/2 water land. Sycamore,
 Hackberry, Sugar, S. W. Mugth. Spice & P. Gum
 North Between Sec: 32 & 33
 18.00 To East bank of Driftwood Beech 18 S 72 N 50
 Sugar 16 S 77 N 33
 A. large Mound 5 Chains East
 65.00 Np the River and across a sand bar to lower
 end of Diftons Island
 80.00 Set post on upper point of Diftons Island
 No bearing trees - Sept. 15th 1819
 East Between Sec: 28 & 33 On Brandon
 6.81 To East Bank of River
 40.00 Set temporary g^r. Sec. post
 81.00 Intersected East line 1.90 lks South of post
 Sand Billy 2nd water, Beech, Poplar, Oak, Sugar, S. W.
 Mugth. Spice

West Corrected Between Sec: 28 & 33
 40.00 g^r. Sec. corner Beech 24 S 75 N 20
 do 8 S 5 E 13
 74.19 To River Bank Bar. Elder 5 S 47 E 6
 do 12 S 36 N 39
 81.00 Section corner
 North Between Sec: 28 & 29
 10.70 In West Bank of River bottomwood 16 S 63 N 15
 do 8 S 76 E 21
 23.08 A. Beech 18 in. diam.
 40.00 g^r. Sec. corner Beech 24 S 87 N 25
 do 12 S 54 E 23
 67.56 A. Beech 12 in. diam.
 80.00 Set post corner to Sec: 20, 21, 28, 29
 Beech 12 S 27 N 36
 do 10 S 45 E 26
 First 1/2 mile low bottom. last 1/2 water. Sycamore,
 Beech, Sugar, Hackberry, Mugth. Spice & P. Gum
 East Between Sec: 21 & 28 On Brandon
 40.00 Temporary g^r. Sec. post
 45.78 To West Bank of River
 50.28 To East Bank of River
 80.74 Intersected East line 2.14 lks South of post
 Sand flat 1st water, Hackberry, Elm, Buckeye, Sugar, Sycamore, Mugth. Spice
 West Corrected
 29.46 To East Bank of River bottomwood 12 S 41 E 15
 N. Maple 5 S 44 N 6
 34.96 To West Bank of River Hackberry 6 S 43 N 15
 do 8 S 63 E 8
 40.37 g^r. Sec. corner N. Elm 6 S 75 N 28
 Buckeye 12 S 40 E 5
 80.74 Section corner

North Between Sec: 20 & 21
 27.00 H. Hackberry 18 in. diam.
 40.00 gr. Sec. corner Beech 20 S 16 N 25
 do 12 S 14 E 10
 62.00 H. Beech 15 in. diam.
 80.00 Set post corner to Sec: 16, 17, 20, 21
 Hackberry 18 S 60 E 11
 Buckeye 15 S 60 N 15
 First rate Bottom land, Beech, Hackberry, Sugar, Elm, Sycamore, Ash, & Walnut
 East Between Sec: 16 & 21 On Random
 40.00 Temporary gr. Sec. post
 55.00 To West Bank of River
 63.00 To East Bank of River
 80.92 Intersected East line 2.34ths South of post
 Live River Bottom land, Sycamore, bottomwood, Hackberry, Buckeye &
 West Corrected
 17.92 To East Bank of River N. Maple 10 S 66 E 7
 bottomwood 6 S 45 N 21
 25.92 To West Bank Sycamore 10 S 73 N 18
 bottomwood 12 S 62 E 27
 40.46 gr. Sec. corner Walnut 10 S 68 N 12
 Box Elder 10 S 65 E 14
 80.92 Section corner
 North Between Sec: 16 & 17
 15.00 Entered fallen timber
 40.00 gr. Sec. corner in thicket fallen timber no bearing
 58.00 Left fallen timber
 65.80 H. N. Ash 12 in. diam.
 80.00 Set post corner to Sec: 8, 9, 16, 17
 Beech 16 S 42 N 6
 N. Elm 30 S 53 E 15
 Bottom land, Beech & Elm, the rest of line Sugar, Hackberry, Sycamore, Ash, &
 East Between Sec: 9 & 16 On Random
 40.00 Temporary gr. Sec. post
 80.90 Intersected East line 2.75ths South of post

Live River Bottom land 1st rate, Sugar, Beech, Ash, Elm,
 Sycamore & Walnut, Spruce, Pine
 West Corrected
 40.45 gr. Sec. corner Buckeye 12 S 84 E 18
 Red Oak 30 S 47 N 15
 80.90 Section corner S 40.79th 1819
 North Between Sec: 8 & 9
 25.90 H. Hickory 20 in. diam.
 40.00 gr. Sec. corner Beech 18 S 76 E 31
 do 24 S 61 N 27
 66.38 H. Beech 24 in. diam.
 80.00 Set post corner to Sec: 4, 5, 8, 9
 Beech 20 S 43 N 31
 Buckeye 10 S 33 E 11
 First rate Bottom, Beech, Sugar, Ash, Hackberry,
 Buckeye & Walnut, Spruce &
 East Between Sec: 4 & 9 On Random
 40.00 Temporary gr. Sec. post
 70.50 To West Bank of River
 74.96 To East Bank of River
 81.06 Intersected East line 2.21ths South of post
 First rate Bottom, Sugar, Hackberry, Ash, Walnut, Spruce
 West Corrected
 6.10 Post on E. bank of River bottomwood 10 S 24 N 8
 do 12 S 65 E 11
 10.56 Post on W. Bank of River on a point covered with
 small Willow bushes no bearing trees
 40.53 Temporary gr. Sec. post Buckeye 10 East 12
 do 12 S 31 N 16
 81.06 Section corner
 North Between Sec: 4 & 5
 22.40 H. Buckeye 12 in. diam.
 40.00 gr. Sec. corner N. Ash 10 S 79 N 18
 R. Oak 12 S 84 E 22

58.50 H. Hackberry 18 in. diam.
 81.75 Intersected North Boundary 7.08ths West of post
 in a Pond no bearing trees
 First rate Bottom, Sugar, Beech, Hackberry, Ash, Walnut, Spruce &
 North Between Sec: 31 & 32
 16.75 To East Bank of River. Set post on a point covered
 with Willow bushes - no bearing trees
 21.42 To West Bank of River Box Elder 6 S 54 N 14
 do 5 S 10 N 9
 40.00 gr. Sec. corner Buckeye 10 S 4 N 8
 Hackberry 24 S 4 E 20
 70.07 H. N. Ash 30 in. diam.
 80.00 Set post corner to Sec: 29, 30, 31, 32
 Beech 24 S 81 E 30
 Red Oak 15 S 37 E 21
 First rate Bottom, Walnut, Ash, Hackberry, Buckeye, Walnut, Spruce
 East Between Sec: 29 & 32 On Random
 40.00 Temporary gr. Sec. post
 73.77 To West Bank of River opposite end of 21st Island
 80.90 Intersected East line 68ths North of post
 Live Timber same with Sugar
 West Corrected
 7.13 Set post on West Bank of River Buckeye 10 S 70 E 25
 Sugar 18 S 33 N 37
 40.45 gr. Sec. corner N. Ash 8 West 12
 do - S 84 E 10
 80.90 Section corner S 40.79th 1819
 West Between Sec: 30 & 31
 32.54 H. Sugar 12 in. diam.
 40.00 gr. Sec. corner Red Oak 36 S 77 E 7
 Beech 20 S 77 N 17
 62.70 H. Beech 16 in. diam.
 72.50 Intersected West Boundary 1.35ths North of post
 Beech 6 S 25 N 18
 do 36 S 34 E 12
 First 1/2 mile back, last 1/2 m. rolling 2nd rate, Beech,
 Sugar, Oak, Walnut, Spruce &
 Live River Bottom land 1st rate, Sugar, Beech, Ash, Elm,
 Sycamore & Walnut, Spruce, Pine

North Between Sec: 29 & 30
 26.35 H. Beech 12 in. diam.
 40.00 gr. Sec. corner Beech 30 S 20 N 27
 do 36 S 81 N 45
 61.30 H. Beech 20 in. diam.
 80.00 Set post corner to Sec: 19, 20, 29, 30
 Beech 10 S 78 E 7
 do 20 S 40 N 28
 Live River Bottom land, Beech, Sugar, Oak, Walnut, Spruce
 East Between Sec: 29 & 29 On Random
 40.00 Temporary gr. Sec. post
 81.00 Intersected East line 60ths North of post
 Live River Bottom land, Beech, Sugar, Oak, Walnut, Spruce
 West Corrected
 40.50 gr. Sec. corner Beech 12 S 12 N 21
 Sugar 10 S 33 E 11
 81.00 Section corner
 West Between Sec: 19 & 30
 16.00 H. N. Ash 40 in. diam.
 40.00 gr. Sec. corner Gum 24 S 50 E 8
 Maple 8 S 15 E 16
 57.84 H. Beech 12 in. diam.
 72.80 Intersected West Boundary 26ths South of post
 Gum 12 S 81 E 14
 Beech 20 S 11 N 12
 Live River Bottom land, Beech, Oak, Gum, Hickory & Walnut, Spruce
 North Between Sec: 19 & 20
 21.38 H. Beech 12 in. diam.
 40.00 gr. Sec. corner Beech 18 S 60 N 3
 Dogwood 4 S 29 E 8
 60.00 Entered fallen timber
 80.00 Set post corner to Sec: 17, 18, 19, 20
 Hornbeam 6 S 65 N 32
 Cherry 4 S 84 E 44
 Live River Bottom land, Beech, Oak, Hickory
 Walnut, Spruce

East Between Sec. 17 & 20 On Random
 10.00 Lt. Temporary gr. Sec. post
 80.66 Intersected East line 31 lbs North of post
 Land level 2nd water Beech, Sugar, Oak, 5th Angth Spice 8th

West corrected
 40.33 gr. Sec. corner Beech 12 S 21 N 5
 Sugar 15 S 80 E 16

80.66 Section corner

West Between Sec. 18 & 19

18.86 H. Beech 12 in. diam.

40.00 gr. Sec. corner Beech 10 S 12 N 18
 W. Oak 8 S 60 E 6

56.50 H. W. Oak 12 in. diam.

73.12 Intersected West Boundary at the Post

First 1/2 mile 1st water, last 1/2 water, Beech, Sugar,
 North Between Sec. 17 & 18 Sept. 21st 1819

15.00 Soft fallen timber

30.50 H. Beech 15 in. diam.

40.00 gr. Sec. corner Hornbeam 6 S 51 N 14
 B. Walnut 20 S 65 E 25

64.24 H. Beech 10 in. diam.

80.00 Set post corner to Sec. 7, 8, 17, 18
 Beech 10 S 55 E 20

do 6 S 76 N 7
 Land level 1st water, Beech, Sugar, Oak, 5th Angth Spice

East Between Sec. 8 & 17 On Random

40.00 Temporary gr. Sec. post

80.10 Intersected East line 92 lbs North of post

Land & timber same with Poplar

West corrected

40.05 gr. Sec. corner Hornbeam 6 S 79 E 11
 Beech 15 S 68 N 46

80.10 Section corner

West Between Sec. 7 & 18

18.18 H. Beech 20 in. diam.

40.00 gr. Sec. corner W. Elm 36 S 43 E 28
 Poplar 36 S 53 N 31

61.50 H. Beech 10 in. diam.

73.50 Intersected West Boundary 2.45 lbs South of post
 Beech 12 S 4 E 13

do 12 S 45 N 5

First 1/2 mile 1st water, last 1/2 water, Beech, Sugar,
 Poplar, Hackberry, Ash, Angth Spice & Paw Paw

North Between Sec. 7 & 8

19.91 H. Beech 12 in. diam.

40.00 gr. Sec. corner Hackberry 18 S 44 E 20
 Hackberry 6 S 48 N 7

57.03 H. Beech 24 in. diam.

80.00 Set post corner to Sec. 5, 6, 7, 8

Beech 12 S 10 N 23

W. Oak 40 S 51 E 36

Land level 1st water, Beech, Oak, Poplar, Angth Spice 8th

East Between Sec. 5 & 8 On Random

40.00 Temporary gr. Sec. post

80.60 Intersected East line 18 lbs North of post

Land level 1st water, Beech, Sugar, Poplar, W. Oak, Angth Spice, Paw Paw

West corrected

40.30 gr. Sec. corner Beech 20 S 20 N 18

do 10 S 47 N 20

80.60 Section corner

West Between Sec. 6 & 7

19.97 H. Beech 20 in. diam.

40.00 gr. Sec. corner W. Oak 18 East 4

do 15 S 61 N 30

71.13 H. Beech 20 in. diam.

72.37 Intersected West Boundary 2.12 lbs South of post

W. Ash 18 S 70 E 4

Beech 12 S 11 E 6

Land level 1st water, Beech, Oak, Poplar, Angth Spice

North Between Sec. 5 & 6

19.78 H. Beech 12 in. diam.

40.00 gr. Sec. corner Beech 10 S 35 N 13
 do 18 S 53 N 11

62.56 H. Beech 12 in. diam.

81.56 Intersected North Boundary 7.54 lbs West of post
 Maple 18 S 28 E 14

Beech 12 S 28 N 18

Land level 1st water, Beech, Oak, Hickory,

Angth Spice, 8th Sept. 22nd 1819

Meanders of the East Fork of White River

In Township 6 N 6 E, commenced on Sec. line

Between Towns 6 N 6 E to a corner on line between

Sec. 31 & 32. On bearing trees.

Courses Distances Remarks

Commenced on town line between Towns 6 N 6 E

do a corner on line between

Sec. 31 & 32. No bearing trees

from last corner

N 80 E 5.23

N 64 E 4.30

S 86 E 7.20

S 56 E 10.95

N 69 E 10.00

N 18 E 18.35

N 64 E 7.20

S 58 E 12.28

S 40 E 8.10

do H. corner / Sugar & Beech on line

Between Sec. 32 & 33. from last corner

N 35 E 17.50

N 15 N 12.00

do H. corner / 2 Beech & Elms on line

Between Sec. 32 & 33

from last corner

Courses Distances Remarks

North 6.45

S 69 E 20.70

S 50 E 14.30

S 24 E 13.75

S 29 N 17.40

S 67 E 7.75

S 85 E 12.50

S 36 E 10.20

North 8.00

do H. corner / W. Maple & Bottomwood on

line between Sec. 31 & 32. from last corner

S 10 E 10.08

S 65 E 28.60

do H. corner / H. Sugar & Hornbeam on

line between Sec. 31 & 32. from last corner

N 28 E 19.00

do H. corner / 2 Bottomwoods on line

Between Sec. 31 & 32. from last corner

S 45 N 28.50

do H. corner / H. Maple & Bottomwood on

line between Sec. 31 & 32. from last corner

S 42 E 17.50

S 8 N 12.25

S 58 N 19.00

North 9.20

S 35 E 12.60

do H. corner / H. Sycamores & Bottomwood on

line between Sec. 31 & 32. from last corner

N 29 E 11.00

do H. corner / in thicket of fallen timber on

line between Sec. 31 & 32. from last corner

S 13 E 24.00

S 24 N 16.00

S 53 N 18.00

do Mouth of land, Beech, Oak, 1.25 lbs water

Courses	Distances	Remarks	Courses	Distances	Remarks
N 8 W	6.30		S 64 E	18.00	
		To H. corner / 2 Sycamores / on line Between Secs 40 & 41	N 34 E	17.00	
		From last corner	N 17 W	13.00	
N 11 E	14.80				To H. corner / H. Buckeye & Sugar / on line Between Secs 29 & 32
		To H. corner / H. Alder & H. & / Hackberry on line Between Secs 30 & 34			From last corner
		From last corner			To H. corner (two Cottonwoods) / on line Between Secs 28 & 29
N 26 E	12.26		N 71 E	20.00	
		To H. corner / 2 Willows / on line Between Secs 30 & 34	N 47 E	14.50	
		From last corner	N 25 E	13.50	
N 30 W	17.00		N 28 W	17.30	
N 7 W	18.00		N 68 E	8.00	
		To H. corner on East Bank / on line Between Secs 30 & 34	N 83 E	14.50	
		September 23 rd 1819	N 38 E	10.40	
		Meanders on West Bank of River / Commenced on line Between Secs 30 & 34	N 6 W	7.80	
N 5 W	10.00				To H. corner / 2 Hackberries / on line Between Secs 21 & 22
		To H. corner / 2 Box Elders / on line Between Secs 31 & 32			From last corner
		From last corner	N 12 E	11.00	
N 70 E	6.00		N 64 E	28.00	
N 74 E	5.20		N 25 E	9.00	
East	4.70		N 10 E	18.80	
S 63 E	10.30		N 45 W	39.60	
N 61 E	11.60				To H. corner / H. Sycamore & Cottonwood / on line Between Secs 16 & 21
N 20 E	18.50				From last corner
N 62 E	7.40		N 41 E	17.00	
S 57 E	12.16		N 9 W	12.20	
S 41 E	7.96		N 59 W	18.75	
			N 2 E	10.00	
			N 36 E	13.00	
					To H. corner / 2 Hackberries / on line Between Secs 15 & 16

Courses	Distances	Remarks	Tiptons Island.	
		From last corner	Commenced at the 1/4 section post in line between Secs 29 & 32 in S. 71. E. 66. then S. 89° 50' E. in said sec. line to the N. bank of the West Branch of White River, where a corner was established, from which, a Cottonwood 16, b. S. 52° 20' E. 24 lks + do 8 " S. 63° 30' E. 25 " thence in same course across 2° 20' + set post from which a Cottonwood 18, b. S. 68 1/2° E. 35 lks + a Maple 5 " S. 27 1/4° E. 52 1/4 "	
		To H. corners (2 Elms) on line Between Secs 10 & 15	Next proceeded to the 1/4 post in line between Secs 28 & 33. + run S. 87° 14' W on said sec. line 33° 69' lks to river, corner N. 6. then West on same course to E. bank of River, 12.50 lks. then across E. branch of River on to Island 4° 62' + established a post, from which the Survey of the Island commenced. thence	
		From last corner	S. 50 E 5.70	
N 12 E	23.00	Opposite mouth of Sand Creek	S. 76 1/4 W 1.58	
N 25 W	15.75		S. 13 3/4 E 3.50	at 150 Offset to right to river 4° 30'
N 32 W	18.20		S. 50 3/4 W 3.71	S. 13 1/4° W 2.00 to River,
N 38 W	6.50		S. 57 1/2 W 4.59	at right angles. lks to River.
		To H. corner (Buckeye & Walnut) / on line Between Secs 9 & 10	S. 84 1/2 W 14.47	2.50 lks to River.
		From last corner	S. 57 1/4 W 7.43	2.00 lks to River.
		To corner / on point - no bearing trees / on line Between Secs 4 & 9	N. 36 1/4 W 5.78	at 2.00 - 50 lks to River.
		From last corner	N. 6° W 7.67	at 3.50 - 50 " " "
N 10 E	14.50		N. 26 3/4 E 8.50	at 4.50 - 50 " " "
N 45 E	4.20		N. 50 E 6.36	1.86 lks to River
N 37 E	12.50		S. 80 E 12.71	at 3.00 - 86 lks to River
N 28 W	8.40		S. 11 3/4 W 3.93	N. E. point of Island b. S. 88° E. 2.00 lks.
N 28 W	16.00			+ 2.50 lks to River,
N 8 W	18.20			at 3.00 - 50 lks to River.
		To H. corner on West Bank of River on line Between Secs 7 & 8	S. 21 1/2 W 1.50	
		Surveyed by B. H. Morris & S.	S. 6 3/4 E 2.56	to place of Beginning + set post, a Buckeye 8. b. S. 7° 1/4 W 57 3/4 lks + a Hackberry 20 " S. 47 1/2° W 44 1/2 "
				Island contains according to above notes 44 42 1/1000 acres.
				Surveyed by J. H. Sprague.
				June 19 + 20, 1846.

Township N. 8 North, Range N. 6 East 2nd Mer.

Range Line - Var. 6.45 E

North Between Ranges 6 & 7 E. Township 8 North
On the East Side of Sec. 36

40.00 gr. Sec. corner Beech 8 S 49 E 19
do 12 S 12 N 15

40.50 H. Branch 4 lbs S. E

50.27 H. Beech 18 in. diam.

80.00 Set post corner to Sec. 25 S 36

Poplar 12 S 34 E 20

Beech 16 S 60 N 20

Land Rolling 2nd rate, Beech, Poplar, Oak, Ang. Spice

North On the East Side of Sec. 25

5.50 H. Beech 20 in. diam.

39.00 H. Branch 4 lbs S. E

40.00 gr. Sec. corner Beech 10 S 10 N 29

do 8 S 85 E 24

72.00 H. Branch 4 lbs East

80.00 Set post corner to Sec. 24 S 25

Beech 12 S 87 E 15

do 7 S 87 N 17

Land level 2nd rate, timber as above

North On the East Side of Sec. 24

22.55 H. Beech 20 in. diam.

40.00 gr. Sec. corner Beech 18 S 85 N 8

do 16 S 49 E 26

62.40 H. Beech 18 in. diam.

80.00 Set post corner to Sec. 13 S 24

Beech 10 S 58 N 4

do 8 S 38 E 26

Land & timber as before

June 3rd 1819

North Between Ranges 6 & 7 E. Township 8 North

On the East Side of Sec. 13

27.20 H. Beech 18 in. diam.

36.00 H. Branch 30 lbs S. W

40.00 gr. Sec. corner Beech 6 S 20 E 20

do 12 S 30 E 17

74.50 H. Branch 10 lbs S. W

80.00 Set post corner to Sec. 12 S 13

Sugar 10 S 71 E 4

Poplar 5 S 35 N 14

Land level 2nd rate, Beech, Poplar, Oak, Ang. Spice

North On the East Side of Sec. 12

11.00 H. Elm 24 in. diam.

40.00 gr. Sec. corner Gum 16 S 40 E 14

Beech 18 S 5 N 34

60.00 Branch 20 lbs West

80.00 Set post corner of Sec. 11 S 12

Beech 20 S 30 E 16

do 15 S 22 N 26

Land & timber as before

North On the East Side of Sec. 1

18.50 H. Beech 50 lbs S. W

40.00 gr. Sec. corner Ash 16 S 59 N 12

Beech 7 S 52 E 24

52.50 H. Elm 40 in. diam.

80.00 Set post corner of Sec. 1. h. 31. 36 S 8 7

H. L. 6 S 7 E

Beech 25 S 50 E 11

Shishou 7 S 48 N 42

Land level 2nd rate, Beech, Sugar, Poplar,

Ash, Ang. Spice June 4th 1819

Random Line

East On Random line Between Towns 7 & 8 N. Range 6 East

S Sec. 4 S 33 from the River

The River 4.71 lbs wide

31.00 Set temporary post for Sec. 33 S 34

Low bank, Sycamore, Buckeye, Hackberry, Beech, Sugar, Poplar

East Random line continued

40.00 Temporary gr. Sec. post

80.00 Set temporary post for Sec. 34 S 35

Land & timber as above

East Random line continued

40.00 Temporary gr. Sec. post

80.00 Set temporary post for Sec. 35 S 36

Land ric k. Timber Poplar, Beech, Ang. Spice

East Random line continued

40.00 Temporary gr. Sec. post

76.50 Set temporary post. Town corner

True line

West Between Townships 7 & 8 N. R. 6 East

On the South Side of Sec. 36

40.00 gr. Sec. corner Beech 8 S 9 N 4

do 30 S 43 N 6

70.40 H. Beech 15 lbs South

80.00 Set post corner to Sec. 35 S 36

Beech 24 S 41 E 12

do 7 S 31 N 29

Land Rolling, Beech, Poplar, Ang. Spice

West On the South Side of Sec. 35

40.00 gr. Sec. corner Beech 18 S 10 E 18

do 8 S 12 E 23

80.00 Set post corner to Sec. 34 S 35

Beech 12 S 62 E 8

do 12 S 30 N 18

Land & timber as before

West On the South Side of Sec. 34

40.00 Set post to gr. Set corner

Ash 8 S 41 E 4

N. Walnut 8 S 85 N 22

80.00 Set post corner to Sec. 33 S 34

Sugar 8 S 79 E 30

do 15 S 81 E 14

Land level 2nd rate, Beech, Poplar, Ang. Spice

West On the South Side of Sec. 33

22.00 Intersected River

East On the South Side of Sec. 31

00.75 H. Branch 5 lbs S. E

17.50 H. Branch 10 lbs S. W

35.50 H. Branch 4 lbs S. W

40.00 gr. Sec. corner Beech 6 S 23 N 8

do 20 S 83 E 26

49.50 H. Oak 30 in. diam.

80.00 Set post corner to Sec. 31 S 32

Beech 15 S 39 N 19

do 10 S 59 E 6

Land Rolling 2nd rate, Beech, Poplar, Oak, Ang. Spice

East On the South Side of Sec. 32

6.35 H. Ash 20 in. diam.

40.00 gr. Sec. corner Beech 12 S 69 E 23

do 10 S 85 N 30

67.00 Intersected low ground

70.00 H. Poplar 300 lbs S. W

80.00 Set post corner to Sec. 32 S 33

Beech 20 S 74 N 39

do 15 S 23 E 40

Land Rolling 2nd rate, Beech, Poplar, Sugar, Ang. Spice

East On the South Side of Sec. 33

40.00 gr. Sec. post Buckeye 12 S 75 N 24

do 10 S 38 N 18